

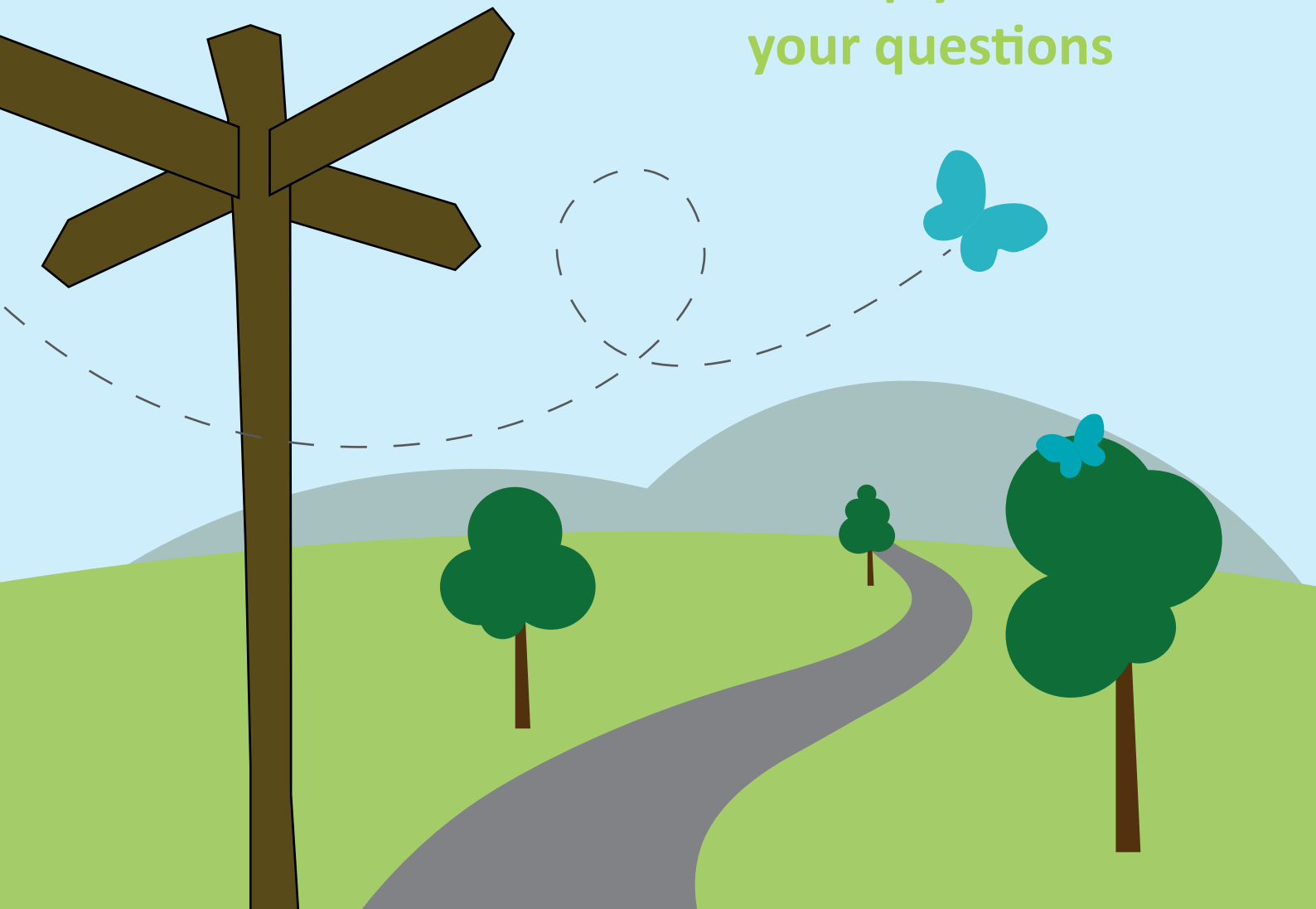


The Care Advice Line

Do you have care and support needs?

Concerned how you will pay for it?

Let us help you answer your questions





Who is this service for?

This free information and advice service from The Care Advice Line is available to anyone who has care or support needs.

You could be:



- A carer looking after a family member or friend.
- Concerned about a member of your family who already receives care.
- Thinking about your own future care needs.

There are many questions you may want to ask such as:



- Am I eligible for any state funded support?
- How will the care reforms affect me?
- Do I have to sell my house to pay for my care?

There may also be things that you haven't thought about such as:



- Have you considered important legal matters?
- Are you aware of the ways to fund your care whilst legitimately protecting any inheritance?
- Are you aware of the support you are entitled to as a carer?



Care Act 2014



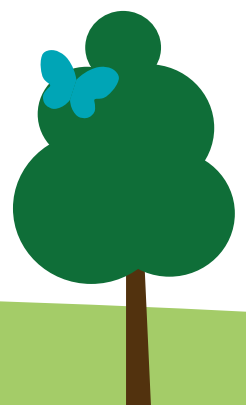
How can we help you?

We can provide you with personalised information and advice on a range of topics including:

- How the health and social care system works.
- The care reforms and what they mean to you personally.
- Helping you to plan for your future care needs.
- Help to understand how much care costs and any financial support you might be eligible for.
- Independent advice on benefit entitlements and how to claim.
- Access to appropriate regulated financial advice so you can explore the different ways to pay for care.

The Care Advice Line is a free information and advice service for adults and carers in Gloucestershire. Our aim is to help individuals and their families make informed decisions about their care and support and how they pay for it.

For a free chat call 01452 22 22 00



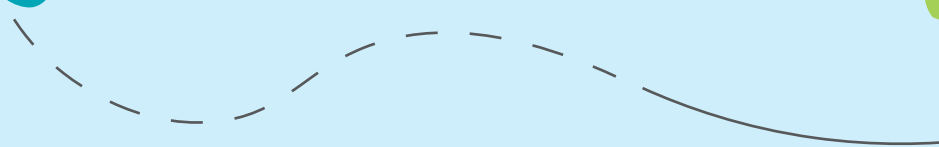
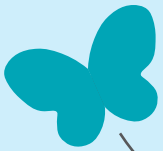
For free information and advice please contact us on

01452 22 22 00

www.thecareadvice.org



The Care Advice Line



Telephone calls may be recorded for quality and monitoring purposes.

The Care Advice Line service is funded by Gloucestershire County Council who may require us to share your data with them to assist with any audits, issues or complaints.

This free service is available to people with care and support needs who live in Gloucestershire or are supported by Gloucestershire County Council to live outside of the county.

The Care Advice Line is an equal opportunities employer.

The Care Advice Line Company No 0 9197095. Registered Office: Digital World Centre, 1 Lowry Plaza, The Quays, Salford, Manchester M50 3UB.